

LINNEMANN FAMILY FUNERAL HOMES AND CREMATION CENTER

# FUNERAL PLANNING GUIDE



*"Doing more to make it easier for you."*

[WWW.LINNEMANNFUNERALHOMES.COM](http://WWW.LINNEMANNFUNERALHOMES.COM)



# Notes

---





# Table of Contents

---

About Linnemann Funeral Homes .....	2
Meet Our Staff.....	2-3
Funeral Misconceptions .....	4
Funeral Checklist .....	5
Making Arrangements .....	6
Creating Meaningful Ceremonies .....	7
General Price List .....	8-11
Cremation Packages .....	12-17
Casket Price List .....	18
Outer Burial Container Price List .....	19
Cremation Urn Selection .....	20- 21
Urn and Urn Vault Price List .....	22
Payment Options .....	23
Linnemann Event Center .....	24
Social Security and Death Certificate Information .....	25
Kentucky Department of Veteran Affairs .....	26
Aftercare Support .....	27
Linnemann Pet Services .....	28
Loved and Cherished Options .....	29

## About Linnemann Funeral Homes

The passing of a loved one is never easy. At Linnemann Funeral Homes, we understand that during these times of grief, you and your family do not need the additional stress of taking care of all the details. That's why we're committed to "Doing more to make it easier for you." It's not just our motto, it's our mission and our commitment to service. Since 1882, the Linnemann family has been delivering family care that extends well beyond our front doors – that's six generations of Linnemann family members that have been and continue to be committed to providing you outstanding service and family care. From Advanced Planning to Aftercare Services, you can count on us to provide for all your needs.

Linnemann Funeral Homes is one of only 30 funeral homes in the country that has achieved the Pursuit of Excellence Hall of Fame "Golden Eagle" Award for outstanding service. We also were awarded Pursuit of Excellence Awards during the years 2001—2011. Only 99 funeral homes out of 24,000 nationally receive this award for outstanding service and are now considered Hall of Fame Members.

At Linnemann, you'll receive personal attention, professionalism, and understanding every step of the way. Outstanding service is a family tradition and ours is a name you can trust for service catered to your needs to honor your loved ones. Through Linnemann Funeral Homes' Erlanger and Burlington locations and with the addition of our Linnemann Event Center, we can meet the needs of you and your loved ones.



## MEET OUR TEAM



**Louis Linnemann, CFSP**

*President, Funeral Director*

✉ [louis@lfhmail.com](mailto:louis@lfhmail.com)



**A.J. Schier**

*Director of Funeral Service Operations, Funeral Director, Embalmer*

✉ [aj@lfhmail.com](mailto:aj@lfhmail.com)



**Elizabeth Dehner, CFO**

*Chief Financial Officer*

✉ [elizabeth@lfhmail.com](mailto:elizabeth@lfhmail.com)



**Christina Foster**

*Administrative Assistant*

✉ [christina@lfhmail.com](mailto:christina@lfhmail.com)



**Rachel Jones**

*Creative Director*

✉ [rachel@lfhmail.com](mailto:rachel@lfhmail.com)

# MEET OUR TEAM

---



**John Combs**  
*Funeral Director, Embalmer*  
✉ john@lfhmail.com



**Jill Leininger**  
*Funeral Director, Embalmer*  
✉ jill@lfhmail.com



**Lexi Engle**  
*Funeral Director, Embalmer*  
✉ lexi@lfhmail.com



**Robert Lytle Dominguez**  
*Funeral Director, Embalmer*  
✉ robert@lfhmail.com



**Dottie Boone**  
*Director of Advanced  
Funeral Planning*  
✉ dottie@lfhmail.com



**Jason Ballard**  
*Crematory Operator*  
✉ jballard@lfhmail.com



**Nonda Strasburger**  
*Aftercare Coordinator*  
✉ nonda@lfhmail.com

# HOST & HOSTESS STAFF

---



**John**



**Linnea**



**Joyce**



**Barb**



**Amy**



**Shawn**



**Haleigh**



**Claire**



**Joyce**



**Steve**





# FUNERAL MISCONCEPTIONS

---

Many people today don't understand why we have funerals. Anything we don't understand we tend to be skeptical of, even fearful of. Here are some of the most common misconceptions about funerals.

- Funerals are too expensive. The social and emotional benefits of personalized funerals far outweigh their financial costs. Besides, a funeral doesn't have to be lavishly expensive to be meaningful.
- Funerals make us too sad. When someone we love dies, we need to be sad. Funerals provide us with a safe supportive place in which to embrace our pain.
- Funerals are barbaric. On the contrary, meaningful funeral ceremonies are civilized, socially binding rituals. Some people think that viewing the body is barbaric. Cultural differences aside, viewing has many benefits for survivors.
- Funerals are inconvenient. Taking a few hours out of your week to demonstrate your love for the person who died and your support for survivors is a privilege, not an inconvenience.
- Funerals and cremations are mutually exclusive. A funeral (with or without the body present) may be held prior to cremation. Embalmed bodies are often cremated.
- Funerals require body to be embalmed. Not necessarily. Depending on local regulations, funerals held shortly after the death may require no special means of preservation.
- Funerals are only for religious people. Not true. Non-religious ceremonies do not have to be held in a church or officiated by a clergy person and can still help mourners begin to heal.
- Funerals are meaningless. They don't have to be. With forethought and planning, funerals can and should be personalized rituals reflecting the uniqueness of the grieving family.
- Funerals should reflect what the person who died wanted. Yes and no... While pre-planning your funeral may help you reconcile yourself to your own mortality, funerals are primarily for the benefit of the living.
- Funerals are only for grown-ups. Anyone old enough to love is old enough to mourn. Children, too, have the right and the privilege to attend funerals.

By Alan D. Wolfelt, Ph.D.

Grief educator and author of *Understanding Grief Helping Yourself Heal and Creating Meaningful a Funeral*

**WHAT TO BRING TO A FUNERAL ARRANGEMENT**

- Statistical Information Needed (Social Security Number, City and State of Birth, Parents' Names including Mother's Maiden Name, Highest Level of Education)
- Obituary Information prepared (list of: survivors, those preceded in death, club and organization affiliations, church affiliation)
- Organization for Memorial Donations       Cemetery Property Information       Music selections for service
- Life Insurance Policies       Picture for Obituary       \_\_\_\_\_
- Military Discharge Papers (DD214)       Clothing for deceased       \_\_\_\_\_

**PRE-FUNERAL CHECKLIST**

- Cemetery contacted       Speakers contacted
- Clergy contacted       Readers contacted
- Bereavement Committee       Reception planned
- Florist       Catering ordered
- Picture Boards       \_\_\_\_\_
- Memorabilia or pictures to be displayed       \_\_\_\_\_
- Pallbearers contacted       \_\_\_\_\_
- Car List for Funeral Director       \_\_\_\_\_

**NOTES**

---

---

---

---

---

---

---

---

---

---

**POST- FUNERAL CHECKLIST**

Notify your attorney or that of your loved one if the deceased has an estate. The estate must go through probate court to distribute assets. Please contact your attorney for detailed information.

- Notify your financial advisor       Contact utility companies
- Notify Life Insurance companies       Contact service providers
- Notify retirement account holders       Cancel memberships
- Notify financial institutions about accounts       Purchase a grave marker
- Contact mortgage company       Join a grief support group
- Contact credit card compaines       File a final tax return
- Contact employer       Remove the deceased's name from joint accounts, car titles etc.
- Contact health care providers       Close social media sites
- Contact auto insurance company       Adjust beneficiaries on your estate if deceased was named
- Contact auto loan / lease company       Send Thank You cards

# Making Arrangements

---

The first step is to decide what arrangements would best meet the needs of your family and loved ones.

The funeral proceedings decided upon will reflect the personal wishes of you and your loved ones.

There are many options to consider:

## Burial Options

- Complete Service with viewing and then burial (1-day or 2-day)
- Graveside Service
- Immediate or Direct Burial without visitation
- Green Burial



## What is Cremation?

Cremation is the reduction of the body to ashes by intense heat. The ashes are referred to as cremains and cremation is considered a method of final disposition, just as burial is considered a method of final disposition. The term final disposition means the method of removing or disposing of the body.

## Kentucky Cremation Law

Kentucky cremation law does require the authorization and signature of the county coroner before the cremation can take place. The body must be positively identified, and the next of kin to the deceased must sign an authorization for cremation to take place.

Please refer to our Cremation Options Guide (pages 12-17) for several packages that are designed for cremation services, or ask your funeral director for suggestions if you cannot find something to suit your wishes. Your funeral director is very capable of assisting you in these matters.

- Traditional Service with viewing and then cremation
- Celebration of Life (Visitation or Gathering)
- Memorial Visitation/Service without the cremains present
- Memorial Visitation/Service with the cremains present
- Basic Cremation with no further services







# Creating Meaningful Ceremonies

A funeral service should be as unique as the person it is honoring.  
Look for creative ways to personalize the service to represent  
and celebrate the life lived.

- Spend private time with family prior to visitation or funeral
- Have a post-funeral reception
- Select scripture readings that reflect the life of your loved one
- Include photo, scripture verse, poem in memorial folders
- Use a memory table to display hobby items or other memorabilia
- Have memory sheets available for family and friends to write special memories of the deceased
- Have family or friends read special poems, scriptures, other readings
- Incorporate music (CDs, piano, organ, bagpipes, guitar, harp or other instruments or vocalist) into visitation and/or funeral
- Give away a favor of remembrance, candy, hobby etc, at the service
- Consider a Memorial Tribute Video
- Consider a Life Story Booklet
- Use symbolism by lighting a candle, planting a tree, or planting flowers
- Flowers can be used to represent individual grandchildren or children
- Give flowers from the casket spray to friends and family as a memento
- Give personalized candles to family members or display at visitation
- Get a Thumbie (a custom charm made from your loved one's thumb print)
- Incorporate a balloon or dove release
- Include a customized lid panel
- Place special objects in the casket
- Hold the visitation and/or service in a home or any indoor or outdoor facility (such as the deceased's favorite place, homestead or significant landmark)

**“ A funeral is not a day in a lifetime;  
it is a lifetime in a day.”**



## Unforgettable Memories

Families will be sent a digital link for uploading photos.

We will also assist families by scanning hard copy photos (150 maximum)

For Life Story Booklets please select 25 - 30 photos

Memorial Tribute Video:  
300 maximum

Families can select music of their choosing or instrumental (6-8 songs suggested)

### Picture Sorting Checklist:

- Baby
- Childhood
- Family (Parents & Siblings)
- Graduation
- Hobbies/Activities
- Wedding
- Children
- Trips/Vacations
- Family Home
- Important landmarks
- Recent pictures

# General Price List

These prices are effective as of October 22, 2024, but thereafter subject to change without notice.

The goods and services that follow are those we provide to our customers. You choose the items you desire; however, any funeral arrangements you select will include a charge for our Basic Services, detailed below.

Once your selections have been made, you will receive a statement that details the funeral goods and services selected. Other charges may be incurred to meet legal or other requirements and will also be listed and explained on the statement.

## **BASIC SERVICES OF FUNERAL DIRECTOR AND STAFF** **\$3,360**

This fee for our basic services and overhead will be added to the total cost of the funeral arrangements you select. Our fee for the services of funeral director and staff includes, but is not limited to: staff to respond to initial request for service, arrangement conference with family or responsible party, arrangement of funeral, preparation and filing of necessary authorizations and permits, recording vital statistics, staff assistance prior to, during, and following the funeral, including coordination with those providing other portions of the funeral, e.g. cemetery, crematory, and others. Also included in this charge of overhead expenses relative to our facility are insurance, maintenance and utility expenses, secretarial and administrative costs, equipment and inventory expenses.

## **EMBALMING** **\$1050**

Except in certain special cases, embalming is not required by law. Embalming may be necessary, however, if you select certain funeral arrangements, such as a funeral with viewing. If you do not want embalming, you usually have the right to choose an arrangement that does not require you to pay for it, such as direct cremation or immediate burial. (We require at least minimal preservation of the body if it is to remain in our establishment for more than 24 hours following death for the safety and consideration of our resident staff.)

Washing and disinfection when embalming is not desired.	\$440
Refrigeration of unembalmed remains (a requirement by our firm)	\$550

## **OTHER PREPARATIONS**

Autopsy, Donation, Restoration, Disinfection or Other	\$350
HAIRDRESSER	\$65, \$85, \$130
Dress, Cosmetize, Casket, Handle and Care for the body	\$525
Rental Urn	\$40
Fill Cremation Product	\$65
Death Certificates per copy:	
• Kentucky	\$6 (\$2 processing fee)
• Hamilton Co, OH	\$24
• City of Cincinnati	\$27 (Add. \$5 processing fee)

NOTE: Linnemann Funeral Home will electronically submit the death certificate to the physician or Coroner in charge. The physician has 5 days from the time he/she receives the certificate to fill in the section relating to the cause of death and the coroner's office can take longer due to obtaining medical records/reports. The physician or coroner will then electronically sign and submit the death certificate to the Office of Vital Statistics in Frankfort, Kentucky. The Office of Vital Statistics will approve the death certificate and process the order for the number of death certificates requested and mail them to Linnemann Funeral Home. The cost for certified copies is \$6.00 each in Kentucky with a one-time processing fee of \$2.00. Ohio Certified copies vary according to the county of death. The average time of processing the death certificates from the date the information is entered into the KY-EDRS electronic system to receipt of the certified copies is three to four weeks, although it has been known to take up to four or more weeks due to circumstances.

# General Price List

## USE OF FACILITIES

**A. Use of Facilities and Staff Services for VISITATION (1-2) hour same day prior to 5pm) or additional staff necessary for service in another facility. Our services include: set-up of visitation area, placement of encased remains, display of floral arrangements, supervision of and attendance during visitation**

**\$1000**

**B. Use of Facilities and Staff for FUNERAL/MEMORIAL SERVICE or additional Staff necessary for Service in other facility. Our services include coordinating the funeral arrangements, supervision of funeral, and staff to attend funeral/memorial service**

**\$1140**

C. Equipment and Staff Services for GRAVESIDE SERVICES. Our services include: accompaniment of remains to cemetery, supervision of graveside service, and staff to attend service.

\$780

D. Use of Facilities and Staff for Weekday Evening after 5pm or Weekend Visitation  
-in addition to item B

\$435

E. Use of Facilities for Evening Visitation on Saturday and/or Sunday  
-in addition to item D

\$575

## AUTOMOTIVE EQUIPMENT

(Cost includes travel within 25 mile local service radius from home, hospital, airport, etc.  
There is an additional fee of \$2 per mile per vehicle)

**Transfer of remains to funeral home**

**\$570**

**A. Funeral Coach**

**\$540**

B. Evening Church Service Requires Double Coach (Hearse)

\$540

C. Service Utility Car/Flower Car/Funeral Escort

(Additional charge per one-way mile beyond 25 miles)

\$240

E. Motorcycle Escort for procession

\$230

• **Traditional Funeral Service with Same Day Weekday Visitation before 5pm**

**\$8,380**

• **Traditional Funeral Service with Evening or Weekend Daytime Visitation**

**\$8,710**

• **Traditional Funeral Service with Weekend Evening Visitation**

**\$9,290**

## FORWARDING OF REMAINS FROM HERE TO ANOTHER FUNERAL HOME

\$3,840

This charge includes local removal of remains, necessary services of staff, embalming, necessary authorizations, and local transportation to the airport. This charge does not include visitation, rites, or ceremonies prior to forwarding the body or shipping charges.

A. With minimum shipping container

\$4,070

B. With casket selected from our funeral home (in addition to the casket)

\$3,840

C. Air Tray

\$225

D. International Shipping Fee

\$1,100



# General Price List

## RECEIVING REMAINS FOR ANOTHER FUNERAL HOME

\$2,795

This charge includes removal from airport, temporary shelter of remains, transportation of remains to the cemetery and/or funeral home (within 25 mile radius) and necessary services of staff. This does not include visitation, rites or ceremonies.

## IMMEDIATE BURIALS (Range of Prices)

\$4,470-\$6,700

Our charge for an immediate burial, without any visitation, ceremonies or cemetery charges, includes removal and shelter of remains, local transportation to the cemetery, necessary services of staff and authorizations.

A. Immediate Burial (container provided by purchaser)

\$4,470

B. Immediate Burial with Minimum 20 Ga. Metal Casket from this Funeral Home

\$6,700

C. Immediate Burial with casket selected from funeral home (cost of casket additional)

\$4,470

## DIRECT CREMATIONS crematory fee included (Range of Prices)

\$3,820-\$3,880

Direct Cremation with alternative container

\$3,880

Direct Cremation with container provided by the purchaser

\$3,820

Our charge for a direct cremation includes local removal, care of remains, transportation to crematory, basic services of staff, authorizations (excl. ceremony or visitation). If you want to arrange a direct cremation, you can use an alternative container. Alternative containers encase the body and can be made of materials like fiberboard or composition materials (with or without an outside covering.) The containers we provide are fiberboard.

## BODY DONATION (to Medical Science requires preapproval)

\$1,145

## FLOWER DELIVERY

Directors will be happy to deliver any and all flower pieces to a local residence, hospital, nursing home, or other agency or institution within the immediate Northern Kentucky area. Please arrange a time for delivery of the flowers with your funeral director.

## DECEASED PERSONAL AFFECTS

Personal affects that are found and inventoried at the time of removal of the deceased from the hospital, nursing home, or residence are returned to the next of kin or can be delivered to any agency or person the next of kin desires.

## OBITUARIES

Linnemann Funeral Homes offer personalized online memorials that are created in tribute to your loved one and placed on our home webpage at <http://www.linnemannfuneralhomes.com>. An online memorial can also be added to our facebook news feed at [www.facebook.com/linnemannfuneralhomes](http://www.facebook.com/linnemannfuneralhomes). We will also submit information to the local newspapers for obituary notices. Paid death notices can be written by the family and should be run exactly as they are submitted by the designated publication(s). It is at the discretion of the publication to choose which obituaries become feature articles.

## INSURANCE PROCESSING

We will be pleased to assist you in filing for life insurance proceeds. Please consult us for assistance.  
Funeral Home Statement

## CASH ADVANCED ITEMS

Cash advanced items are other vendor's charges that the funeral home offers to pay for at the time of the funeral for the family's convenience. These charges are payable at the time the funeral arrangements are made.

# General Price List

**CASKETS** (Range of Prices) \$2,440 to \$4,375  
(A complete price list will be provided at the funeral home)

**OUTER BURIAL CONTAINERS** (Range of Prices) \$1,640 to \$22,050  
(A complete price list will be provided at the funeral home)

**URNS** (Range of Prices) \$240 to \$645  
(A complete price list will be provided at the funeral home)

**CREMATION OUTER BURIAL CONTAINERS** (Range of Prices) \$350 to \$1,710  
(A complete price list will be provided at the funeral home)

## ADDITIONAL SERVICES

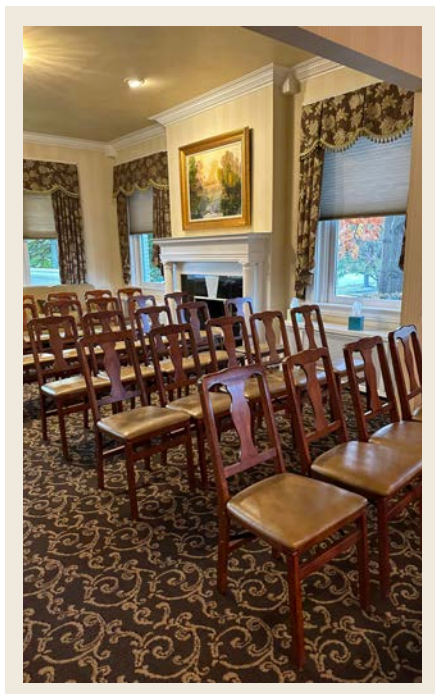
Crematory Fee	\$595
Insurance Processing (per hour)	\$320
Visitation/ Funeral on Holiday	\$930 additional
Private Family Viewing (30 minutes)	\$400
Miscellaneous Service (per hour)	\$380
Motorcycle Escort for processional	\$230
Partial Hearse Fee	\$270
Hairdresser	\$65, \$85, \$130
Military Honors (VFW)	\$150
Flowers	as quoted
Clergy/ Celebrant	\$200 minimum
Musicians	\$150 minimum
Organist	\$150 minimum
Bagpiper	as quoted
Dove Release	as quoted
Butterfly Release	as quoted
Acknowledgment Cards (per 25)	\$50
Register Book	\$80
Memorial Folders or Prayer Cards (per 100)	\$175
Crucifix/Cross	\$34
Memorial Candle	\$40
Bookmarks	\$3.00 each
Cemetery Markers/Monuments	as quoted
Additional Unforgettable Memories Folders	\$3.50 each
Unforgettable Memories Program (Qty 150)	\$425
Unforgettable Memories Video	\$280
Kinko Picture Board (18x24)	\$81
Collage Photo Memory Board (24x36)	\$125

NOTE: Staff services in arranging and carrying out miscellaneous services such as disinterments, shipping or receiving remains from foreign countries and other services not listed above.

**\*A 2% processing fee will be charged for all credit card transactions**

# Complete Service with Cremation

A personalized life commemoration with both visitation and planned ceremonial events, with cremation taking place after.



## PACKAGE INCLUDES:

- Professional services of the funeral director & staff: \$3,360
  - Church or chapel services \$1,140
  - Community receiving of family and friends (1 to 2 hours prior to service) \$1000
  - Transfer of your loved one into our care \$570
  - Preparation of the body \$525
  - Embalming \$1050
  - Crematory fee \$580
  - Cremation casket/container, back page \$1,550 - \$1,775
  - Personalized memorial urn, back page Living Memorial program included \$465
  - Memorial stationery \$385
    - Register book
    - Acknowledgement cards (50),
    - Prayer folders/Holy cards (100),
    - Bookmarks (10)
- Additional Services:
- Evening Visitation \$435
  - Saturday or Sunday Visitation \$575
  - Funeral at church (requires hearse) \$540

Package Offerings \*  
 \$10,895 to \$11,120  
 (No deletions to Package offered)  
 Cash advance items not included

\*Note: A general price list with individual pricing for all products and services is available through your funeral service firm.



# Complete Service with Cremation



## Tribute Package

- Includes the Capella rental casket (\$1,775)
- Constructed of cherry exterior-dark
  - (Includes minimum alternative container)
- Champagne velvet
- Choice of memorial urn, many personalized
- Includes personal remembrance selection
- Includes memorial tribute video



Total: \$11,120

\*Nights and weekends additional\*

## Simple Package

- Includes the Symphony rental casket (\$1,550)
- Constructed of oak exterior-dark;
  - (Includes minimum alternative container)
- Rosetan Crepe
- Choice of memorial urn, many personalized
- Includes personal remembrance selection
- Includes memorial tribute video



Total: \$10,895

\*Nights and weekends additional\*

PERSONALIZED URNS: ALLOWANCE \$465



Mother of Pearl



Midnight Ormate



Scroll



Embrace Blue

Additional premium urns are available on pages 20 - 21

# Memorial Service Cremation

An opportunity for family and friends to come together in a planned tribute to a loved one.



## PACKAGE INCLUDES:

- Professional services of the funeral director & staff: \$3,360
- Use of facilities and staff for memorial service \$1,140
- Use of facilities and staff for memorial visitation \$1000
- Transfer of your loved one into our care \$570
- Crematory fee \$580
- Cremation casket/container \$55 - \$495
- Personalized memorial urn \$465
- Memorial Video Included
- Memorial stationery \$385
  - Register book
  - Acknowledgement cards (50),
  - Prayer folders/Holy cards (100),
  - Bookmarks (10)

## Additional Services:

- Evening Visitation \$415
- Saturday or Sunday Visitation \$550

Package Offerings \*  
 \$8,265 to \$8,705  
 (No deletions to Package offered)  
 Cash advance items not included

\*Note: A general price list with individual pricing for all products and services is available through your funeral service firm.

# Memorial Service

---

## Cremation



### Commemoration Package

PERSONALIZED URNS: ALLOWANCE: \$465  
SEE PAGES 20-21 FOR SELECTION

- Includes the standard alternative container (\$495)
- Constructed of wood composite-light
- Minimal ivory crepe mini pillow and mattress
- Choice of memorial urn, many personalized
- Includes personal remembrance selection
- Includes memorial video



Total: \$8,705

\*Nights and weekends additional\*

### Tribute Package

- Includes the basic identification container (\$265)
- Constructed of cardboard-solid color-dark
- Minimal ivory crepe mini pillow and mattress
- Choice of memorial urn, many personalized
- Includes personal remembrance selection
- Includes memorial video

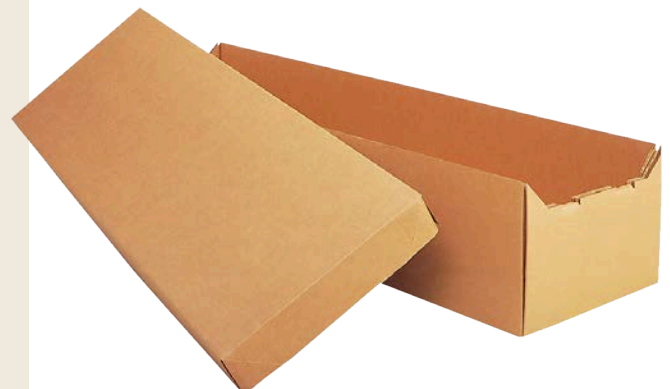


Total: \$8,475

\*Nights and weekends additional\*

### Simple Package

- Includes the minimum cardboard alternative container
- Constructed of cardboard-light
- No interior; no mattress, no pillow
- Choice of memorial urn, many personalized
- Includes personal remembrance selection



Total: \$8,265

\*Nights and weekends additional\*



# Direct Service Cremation

No visitation or service



## PACKAGE INCLUDES:

- Professional services of the funeral director & staff \$3,360
- Transfer of remains to funeral home \$570
- Washing/disinfection and basic care of the deceased \$440
- Crematory fee \$580
- Cremation casket/container, back page \$55 - \$495
- Basic urn, back page \$240

Package Offerings \*  
 \$4,200 to \$4,640  
 (No deletions to Package offered)  
 Cash advance items not included

\*Note: A general price list with individual pricing for all products and services is available through your funeral service firm.



**Jason Ballard**  
 Crematory Operator

## ON-SITE CREMATORY

*You must be able to trust your cremation provider. Other firms contract with third parties to handle cremation services, which can create problems. Linnemann Family Funeral Homes and Cremation Center is the only funeral home in Northern Kentucky with its own private, on-site crematory. This means that your loved one never leaves our care, and that you can trust we're maintaining the highest standards of care.*



*Linnemann On-Site Crematory  
 30 Commonwealth Avenue Erlanger, KY 41018*

# DIRECT CREMATION PACKAGES

## COMMEMORATION



\$4,640

- Includes the standard alternative container (\$495)
- Constructed of Wood Composite-Light
- Minimal ivory crepe mini pillow and mattress
- Choice of basic urn

## TRIBUTE



\$4,410

- Includes the basic identification container (\$265)
- Constructed of Cardboard-Solid color-Dark
- Minimal ivory crepe mini pillow and mattress
- Choice of basic urn

## SIMPLE



\$4,200

- Includes the minimum cardboard alternative container (\$55)
- Constructed of Cardboard-Light
- No interior, no mattress, no pillow
- Choice of basic urn

BASIC URNS: ALLOWANCE \$240



Spartan Dark



Orleans Brown



Natural Veneer Chest



# Casket Price List

---

These prices are effective as of October 22, 2024 but thereafter subject to change without notice.

<b>Casket Description</b>	<b>Casket Name</b>	<b>Interior</b>	<b>Price</b>
Cardboard	Alternative Container	None	\$55
Cardboard	Basic Identification Container	Crepe	\$265
Wood Composite	Nolan Hardboard Container	Crepe	\$495
Hardwood	Rental Casket Symphony	Crepe	\$1,550
Hardwood	Rental Casket Capella	Velvet	\$1,775
20 ga. Steel	Baron White	White Crepe	\$2,440
20 ga. Steel	Bradford Blue	Light Blue Crepe	\$2,690
18 ga. Steel	Sheffield	Rosetan Crepe	\$2,850
18 ga. Steel	Hampton	White Velvet	\$3,150
18 ga. Steel	Kessler	Almond Crepe	\$3,250
18 ga. Steel	Graham	Almond Crepe	\$3,375
18 ga. Steel	Carnation	Pink Velvet	\$3,525
18 ga. Steel	Triton Blue	White Velvet	\$3,625
18 ga. Steel	Beachwood	Almond Velvet	\$3,675
18 ga. Steel	Sterling Copper	Almond Velvet	\$3,750
18 ga. Steel	Sterling Ebony	White Velvet	\$3,750
18 ga. Steel	Silver Rose	Pink Velvet	\$3,825
Poplar Veneer	Stoffer Oak	Soft White Velvet	\$3,975
Poplar Veneer	Stoffer Cherry	Soft White Velvet	\$3,975
Poplar Hardwood	Westminster	Almond Velvet	\$4,375

#### Disclaimer of Warranties

Linnemann Funeral Homes makes no representations or warranties regarding caskets. The only warranties, expressed or implied, granted in connection with goods sold with this funeral service are written warranties, if any, extended by the manufacturers thereof. No other warranties and, specifically, no implied warranties of merchantability and fitness for a particular purpose are extended by the seller.





# Outer Burial Container Price List

---

These prices are effective as of October 22, 2024 but thereafter subject to change without notice.

In most areas of the country, state or local law does not require that you buy a container to surround the casket in the grave. However, many cemeteries require that you have such a container so that the grave will not sink. Either a grave liner or burial vault will satisfy these requirements.

## PREMIUM PROTECTION

The Wilbert Bronze (Triple reinforced concrete)	\$22,050
Wilbert Bronze Triune (Double reinforced concrete)	\$6,260
Wilbert Copper Triune (Double reinforced concrete)	\$6,265

## STANDARD PROTECTION (Double reinforced concrete)

Wilbert Cameo Rose Triune "Remembering Her"	\$5,200
Wilbert Stainless Steel Triune "Remembering Him"	\$5,200
Wilbert Veteran "In Service to Our Country"	\$5,200
Wilbert Venetian Vault	\$3,235

## BASIC PROTECTION (Single reinforced concrete)

Wilbert Continental	\$2,310
Wilbert Salute "In Service to Our Country"	\$2,140
Wilbert Monticello	\$2,095

## MINIMUM PROTECTION (Non-Liner Non-Protective)

Monarch	\$1,860
Grave Box	\$1,640

## ADDITIONAL BURIAL COSTS:

Tent, Grass, Lowering Device (if needed)	\$200
Saturday Vault Delivery Fee	\$115
Sunday Vault Delivery Fee	\$375

### Disclaimer of Warranties

Linnemann Funeral Homes makes no representatives or warranties regarding outer burial containers. The only warranties, expressed or implied, granted in connection with goods sold with this funeral service are written warranties, if any, extended by the manufacturers thereof. No other warranties and specifically, no implied warranties of merchantability and fitness for a particular purpose are extended by the seller.

# Cremation Urn Price List

---

## BASIC



\$240 - Spartan Dark  
Dark Veneer



\$240 - Orleans Brown  
Brass



\$240 - Natural Veneer Chest  
Veneer

## STANDARD



\$305 - Purple Butterfly  
Aluminum



\$325 - Adria White  
Brass



\$330 - Avondale  
Sand-cast Brass



\$335 - Albury  
Solid Hardwood



\$365 - Green Flora  
Resin Cast



\$365 - Burlson  
Hand-crafted  
Wood Veneer



\$465 - Mother of Pearl  
Metal



\$465 - Midnight Ornate  
Etched Brass



\$465 - Renton Mahogany  
Veneer



\$465 - Meadow Green  
Cultured Marble



\$465 - Peacock Memory  
Chest



\$465 - Venice  
Brass



\$465 - Scroll Porcelain



\$465 - Bailey Burwood Veneer



\$465 - Embrace Blue Solid Stone

## PREMIUM



\$645 - Country Roads Walnut Hardwood



\$645 - Carple Onyx Blue Stone



\$645 - Tribute Mosaic Wood



\$645 - Revel Cherry



\$645 - Magnolia Songbirds Resin



\$645 - Avondale Teal Brass



\$645 - Harmony Companion Hardwood



\$645 - Forest Haze Solid Marble

\* Assorted keepsake urns - Starting at \$110

\* See director for assorted jewelry keepsake urns



# Cremation Urn and Urn Vault Price List

These prices are effective as of October 22, 2024, but thereafter subject to change without notice.

Urn Description	Urn Name	Price	Urn Vault Name	Price
Veneer	Spartan Dark	\$240	Concrete Regular or Small Vault	\$440
Brass	Orleans Brown	\$240	Oversize Concrete Urn Vault	\$480
Veneer	Natural Veneer Brown	\$240	Universal or Gray/Salute Urn Vault	\$850
Aluminum	Purple Butterfly	\$305	Monticello Urn Vault (standard)	\$1005
Brass	Adria White	\$325	Venetian Urn Vault (standard)	\$1130
Sand Cast Brass	Avondale	\$330	Monticello Urn Vault (short height)	\$1230
Solid Hardwood	Albury	\$335	Venetian Urn Vault (short height)	\$1370
Resin Cast	Green Floral	\$365	S.S.T. Urn Vault	\$1585
Wood Veneer	Burleson	\$365	Veteran Urn Vault	\$1585
Etched Brass	Midnight Ornate	\$465	Cameo Rose Urn Vault	\$1585
Brass	Venice	\$465	Copper Triune Urn Vault	\$1835
Cultured Marble	Meadow Green	\$465	Bronze Triune Urn Vault	\$1830
Chest	Peacock Memory	\$465		
Porcelain	Scroll	\$465	<b>Keepsake Urns</b>	<b>Price</b>
Veneer	Bailey Burwood	\$465	Adria Memento White	\$130
Solid Stone	Embrace Blue	\$465	Green Leaf Memento	\$130
Metal	Mother of Pearl	\$465	Embrace Teak Memento	\$130
Walnut Hardwood	County Roads	\$645	Alabaster Brown Memento	\$130
Stone	Carpel Onyx Blue	\$645	Avondale Teal Memento	\$130
Wood	Tribute Mosaic	\$645	Memory Tree Memento	\$130
Cherry	Revel	\$645	Avondale Copper Memento	\$130
Resin	Magnolia Songbirds	\$645	Black & Gold Circle Memento	\$130
Brass	Avondale Teal	\$645	Blue Rose Memento	\$130
Hardwood	Harmony Companion	\$645	Radiance Memento	\$130
Solid Marble	Forest Haze	\$645	Serene Blue Gray Memento	\$130
			Purity Violet Memento	\$130
			Purity Green Memento	\$130
			Mother of Pearl Elite Memento	\$130
			Going Home Memento	\$130

#### Disclaimer of Warranties

Linnemann Funeral Homes makes no representations or warranties regarding caskets. The only warranties, expressed or implied, granted in connection with goods sold with this funeral service are written warranties, if any, extended by the manufacturers thereof. No other warranties and, specifically, no implied warranties of merchantability and fitness for a particular purpose are extended by the seller.

# Payment Options

---



We realize the expense of a funeral for a loved one is often unexpected and unplanned. Therefore, we offer several choices for your consideration in meeting these unanticipated expenses. Unfortunately, funds held in estate, on deposit in banks, credit unions, savings associations or the like often take weeks, sometimes years to access. Due to the nature of these situations, we cannot wait for payments from estates and the aforementioned. We will be happy to direct you in finding sources from a local bank if the below options do not match your situation.

The following methods of payment are available to you. We want to discuss them with you now so you may choose the one that fits your individual needs. Please check the option below that you wish to choose.

- I wish to pay with a personal check or with cash prior to the funeral service.
- I wish to pay using my VISA, MasterCard, or Discover card at the time when arrangements are made  
\*A 2% processing fee will be charged for all credit card transactions
- I wish to assign death benefits from an assignable, in-force life insurance policy and incur a 5% fee from C&J Financial, LLC to do so. We will ask the beneficiary or beneficiaries to sign an assignment form and a claimant's statement. The original policy and a certified copy of the death certificate will also be needed.
- I wish to pay using a pre-funded insurance policy or trust account through Linnemann Funeral Homes.

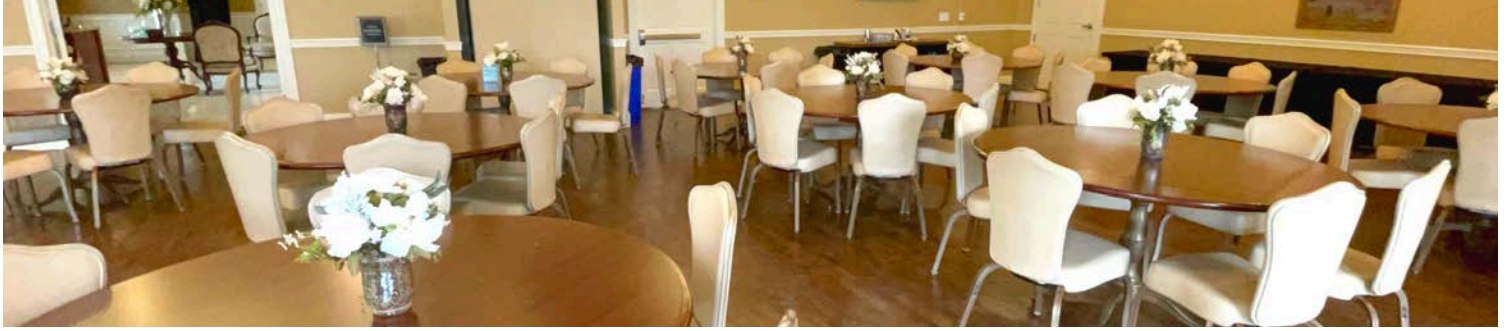
By signing below, I represent to Linnemann Funeral Homes that the payment option I have checked will be the way I pay for the funeral expenses.

---

Funeral Home Representative

---

Purchaser



# Linnemann Event Center

Because the Linnemann name has been synonymous with service and planning since 1882, we recently expanded to meet the needs of our surrounding communities by creating the Linnemann Event Center. Completed in October 2014, our 8,400 square foot facility includes state of the art audiovisual capabilities with classic décor and furniture – our space is the canvas for your imagination. We are the perfect venue for you to gather and celebrate all of life’s events; and just like everything else we do, we built this with you in mind.

## Hours of Operation

Office Hours: 8:00AM – 5:00PM

Event hours may span from 6:00AM – 12:00AM

THERE ARE SO MANY REASONS TO CELEBRATE:

- Anniversaries
- Retirement Parties
- Farwell Parties
- Birthdays
- Weddings
- Athletic Celebrations
- Bridal Showers
- Baby Showers
- Christenings
- Holiday Gatherings
- Graduation Partites
- Fundraisers

## The Linnemann Event Center offers:

- A beautiful, large, clean space
- Staff set-up, break down and clean up
- Tablecloths: black or white
- Silk centerpieces
- Ice
- Warming Ovens
- Coffee and water

## PRICING FOR POST FUNERAL RECEPTIONS

2 Hour Window (Monday - Friday)  
 Before 5:00 p.m. \$325  
 After 5:00 p.m. \$425

2 Hour Window (Saturday & Sunday)  
 Before 5:00 p.m. \$525  
 After 5:00 p.m. \$625

Each additional hour: \$100 Per Hour

All listed rates include existing furniture, restroom baskets, and existing in-room AV house sound and one staff member. Any additional requests will incur supplementary costs.

We will be happy to have you meet with our event staff so that they can provide pricing information based on the hours and space requested. We also offer catering menus from our preferred vendors.





## SOCIAL SECURITY

Once our funeral home has received all biographical information for the deceased, we notify Social Security via Form SSA-721.

Local Office: 7 Youell Street, Florence, KY 41042, phone 1-866-504-4224

Survivors Benefits:

- Children may qualify for dependents or survivors benefits if they are:  
Under age 18 or 18-19 years old and full-time high school students, or 18 or older and disabled. The disability must have started before age 22.
- Husbands and Wives may qualify for dependents benefits if they are:  
62 or older, or Any age and caring for the worker's child(ren) who are under age 17 or disabled, or 62 years or older and divorced from the worker, if the marriage had lasted 10 or more years.
- Widows and Widowers may be eligible for benefits if they are:  
60 or older, or Any age and caring for the worker's children who are under age 16 or disabled, or 60 or older, disabled, and divorced (and meet the 10-years of marriage requirement or widowed.)
- Parents aged 62 or older, who were being supported by the worker, may be eligible for dependents benefits. Benefits paid to a former spouse do not reduce the amount payable to the family. However, marriage and divorce may affect a person's eligibility for family benefits.

You can get an estimate of your Social Security benefits and those of your family by calling Social Security's toll free number 1-800-772-1213 and asking for a form SSA-7004. The estimates will include the benefits you can expect at retirement or if you become disabled and unable to work. It also shows what your family can expect if you retire, become disabled or die.

Social Security Benefits are paid for the prior month. The recipient must have lived for the entire month to be eligible for this benefit. Social Security advises that upon receipt of a check, in a case where recipient has not lived every day of the month, that the deceased's name be written on the envelope along with the Date of Death and that the check be returned to the Post Office.

In all cases, the next of kin is advised to contact the Social Security Administration at 1-800-772-1213, business days between 7:00 a.m. and 7:00 p.m. Where there is a surviving spouse, inquire about the Social Security Lump Sum death benefit of \$255.00.

## DEATH CERTIFICATES

Linnemann Funeral Home will electronically submit the death certificate to the physician or Coroner in charge. The physician has 5 days from the time he/she receives the certificate to fill in the section relating to the cause of death and the coroner's office can take longer due to obtaining medical records/reports. The physician or coroner will then electronically sign and submit the death certificate to the Office of Vital Statistics in Frankfort, Kentucky. The Office of Vital Statistics will approve the death certificate and process the order for the number of death certificates requested and mail them to Linnemann Funeral Home. The cost for certified copies is \$6.00 each in Kentucky with a one-time processing fee of \$2.00. Ohio Certified copies vary according to the county of death. The average time of processing the death certificates from the date the information is entered into the KY-EDRS electronic system to receipt of the certified copies is three to four weeks, although it has been known to take up to four or more weeks due to circumstances.

# Veteran Information

---

Honorably discharged veterans are entitled to the following benefits, which are customarily supplied by the Veterans Administration.

- **Funeral Honors:** The Department of Defense (DOD) is responsible for providing military funeral honors. Upon the f. family's request, Public Law 106-65 requires that every eligible veteran receive a military funeral honors ceremony, to include folding and presenting the United States burial flag and the playing of Taps. The law defines a military funeral honors detail as consisting of two or more uniformed military persons, with at least one being a member of the veteran's parent service of the armed forces. The DOD program calls for funeral home directors to request military funeral honors on behalf of the veteran's family. Veteran's organizations may assist in providing military funeral honors. When military funeral honors at a veteran's cemetery are desired, they are arranged prior to the committal service by the funeral home.
- **Burial Flag:** The Veterans Benefits Administration (VBA) provides a U.S. flag at no cost, to drape the casket or accompany the urn of deceased veteran who served honorably in the U.S. armed forces. It is furnished to honor the memory of a veteran's military service to his or her country. You may get a flag at any VA regional office or U.S. Post Office. Generally, the funeral director will help you.
- **Headstones or Markers:** The Department of Veterans Affairs (VA) furnishes upon request, at no charge to the applicant, a government headstone or marker for the grave of any deceased eligible veteran in any cemetery around the world. Spouses and dependents buried in a private cemetery are not eligible for a government-provided headstone or marker.
- **Interment in National Cemeteries:** The V.A. operates the National Cemetery system. The interment of a deceased veteran of wartime or peacetime service whose service terminated other than dishonorably, or the spouse, surviving spouse or minor children of an eligible veteran, will be authorized in any cemetery in which space is available. There is no charge for the grave in a national cemetery. Cemetery employees will open and close the grave and provide a vault (if necessary). A headstone or marker with an appropriate inscription for each deceased buried in a grave will be provided by the U.S. government.
- **Reimbursement of Burial Expenses:** The V.A. will pay a \$300 burial and funeral expense allowance for deceased veterans who were, at the time of death, entitled to receive pension or compensation or would have been entitled to receive compensation for the receipt of military retired pay. Eligibility is also established when death occurs in a Veterans Administration facility or in a contract nursing home to which the deceased was properly admitted. In addition, the V.A. will pay \$150 plot or interment allowance if the requirements for the burial allowance are met. The plot allowance is not payable if the veteran is buried in a national cemetery. For veterans who die of a service-connected disability, the V.A. will pay a burial allowance up to \$1,100.00 in lieu of other burial benefits.
- **Presidential Memorial Certificates:** A Presidential Memorial Certificate (PMC) is an engraved paper certificate signed by the current President to honor the memory of honorably discharged deceased veterans. Eligible recipients include the deceased veteran's next of kin and loved ones. More than one certificate may be provided. Eligible recipients may apply for a PMC in person at any VA regional office or by U.S. mail. Requests cannot be sent via email. Please be sure to enclose a copy of the veteran's discharge and death certificate. Please submit copies only, as we cannot return original documents. For more information, call (202) 565-4964.

For more information concerning these or any Veteran or Dependent Benefits:

Call toll-free 1-844-698-2311 or Visit [www.va.gov](http://www.va.gov)



# AFTERCARE DEPARTMENT

---

The Aftercare Department is dedicated to continuing our commitment of caring and offering support for our families after funeral service. We provide grief support information for family members and programs for adults and children.

We offer different programs throughout the year to help with the loss of your loved one. For instance, we offer a 6-week grief support series in the fall and spring for those who have lost a spouse. We also honor your loved one at our annual "Holiday Hope Luncheon" with a special ceremony while offering grief support and tools for experiencing the holidays and special occasions without a loved one.

Another Linnemann tradition is to decorate our "Trees of Remembrance" at our Burlington and Erlanger locations, displaying the name of your loved one during the holiday season.

We are here to support you. If any concern or problem arises after the funeral, please feel free to contact us at 859-727-1250



**Nonda Strasburger**  
*Aftercare Coordinator*

---

Do you experience intense sorrow or pain regarding the loss of your loved one? Do you have trouble focusing on anything else but your loved one's death? Do you focus extremely on reminders of your loved one or excessively avoid reminders of your loved one? Are you intensely longing for your loved one? Do you have difficulty accepting the death, or feel numb or bitter about the loss? Do you feel that life is meaningless? These symptoms are normal responses to the death of a loved one. However, after some time these symptoms typically begin to fade. If these symptoms linger or get worse, or you are having difficulty functioning, you may have a condition called Prolonged Grief Disorder. It may be time to get professional help.

*Other signs indicating professional help may be necessary:*

- Withdrawing from normal activities.
- Significant guilt or self-blame
- Wishing you had died with your loved one.
- Depression
- Difficulty carrying out normal routines



**Kyle Linnemann, MA LPCC**  
(859) 760-6743

[kyle@griefcounselingnky.com](mailto:kyle@griefcounselingnky.com)  
[www.kylelinnemanncounseling.com](http://www.kylelinnemanncounseling.com)

If you are experiencing any of these signs or symptoms, Linnemann Funeral Homes would like you to consider seeing Kyle Linnemann, a Licensed Professional Clinical Counselor in Kentucky and Ohio. Kyle has over 13 years of experience in mental health and specializes in the treatment of Prolonged Grief Disorder. He graduated from the University of Kentucky with a Bachelor of Arts degree in Psychology in 2002. He received his Master of Arts degree in Mental Health Counseling in 2010 from the University of Cincinnati. Kyle has been working as a therapist for over five years. You will find that his demeanor is very relaxed, genuine, and nonjudgmental, and at the same time he is passionate and intentional about using his training and expertise to help people feel better. Kyle uses cognitive behavioral therapy and other evidence-based approaches to help individuals suffering from Prolonged Grief Disorder as well as a variety of other emotional difficulties.

We know that seeking help for these symptoms can feel scary and intimidating, and you may feel like no one can help you. We are confident that Kyle can help. That is why we would like to offer you your first session with Kyle for free. This gives you an opportunity to see if Kyle can help you with no strings attached.





## LINNEMANN PET SERVICES

If you have just suffered the loss of your dear pet, we would like to extend our deepest sympathies. Pets are faithful friends and beloved family members. During these times of grief, you and your family do not need the additional stress of taking care of all the details. That’s why we’re committed to “Doing more to make it easier for you.” Linnemann Family Funeral Homes and Cremation Center has an on-site pet crematory that allows us to offer cremation services within the Tri-State for your companion. Much like our human crematory, our separate state-of-the-art facility is operated by our certified crematory operators. As with everything we do, you will find that we are compassionate, professional and understanding.

Our services, all of which are optional, include the following:

- Picking up your pet promptly from your veterinarian’s office or other location
- Helping you select the means of disposition of the remains
- Assisting you in selecting a tastefully appointed item to memorialize your pet
- Assisting with interment (burial) or cremation
- Interpreting any local regulations with respect to how and where you may lay your pet to rest

### BASIC

- Includes transfer of pet from veterinary clinic or residence
- Cremation
- Basic urn
- Cremation certificate

\$165

### STANDARD

- Includes all of the Basic Package services with an upgraded wood urn
- Name plate
- Ink paw print
- Fur clipping
- Photo Cube urn (Navy, Violet or Silver)

\$265

### PREMIUM

- Includes all of the Standard Package services with an upgraded Photo urn (Cherry, Natural, Black) or shadow box urn (Cherry only)
- Clay mold paw print impression

\$375

*If you have any questions, please don’t hesitate to contact Linnemann Family Funeral Homes and Cremation Center at (859) 727-1250. We would be honored to provide our caring pet services to help you have a peaceful closure to a well-lived life.*



# Loved and Cherished

## INFANT CASKET OPTIONS



### Infant Burial Vault/Casket Combo

- Scalloped cover and base
- Embossed heart-and-bow design on cover
- Pewter-tone heart etched with “Loved & Cherished” on center of cover
- Satin interior bedding with matching pillow and choice of a pink or blue bow

#### Casket Size

#### Price

19 inch	\$350
24 inch	\$530
31 inch	\$670

*“If there ever comes a day when we can’t be together,  
keep me in your heart. I’ll stay there forever.”*





Positive reviews from awesome customers like you help other families like yours to feel confident about choosing Linnemann Funeral Home in their time of need. Could you take 60 seconds to go to Google and share your experiences?

Please visit us on Google and leave a review.

We are forever grateful for the privilege to serve the wonderful families of Northern Kentucky.

Thank you for your support!

## FOLLOW US ON SOCIAL MEDIA

For educational content, grief sharing, community connection, and even a laugh every now and then!

Follow us on Instagram:  
[@linnemannfuneralhomes](https://www.instagram.com/linnemannfuneralhomes)



Like us on Facebook  
Linnemann Family Funeral Homes  
and Cremation Center



**LINNEMANN**  
FAMILY FUNERAL HOMES  
AND CREMATION CENTER

30 Commonwealth Avenue • Erlanger, KY 41018

1940 Burlington Pike • Burlington, KY 41005

Phone: (859) 727-1250 • Fax (859) 727-7466

[www.linnemannfuneralhomes.com](http://www.linnemannfuneralhomes.com)